

WINTER 2024

Community CONNECTIONS

Celebrating the interconnectedness of us all

DELAWARE™
HOSPICE
Since 1982



Local 4-H Kindness Matters Club visiting staff at our Saint Francis center.

IN THIS ISSUE

A Letter from our
Leaders
Page 2

Upcoming Events
Page 4 + 5

Donor Spotlight
Page 5

Jazz Brunch
Page 6 + 7

Meet Our Board of
Trustees
Page 8 + 9

Stellar Staff
& Vital Volunteers
Page 10

Ways To Give
Page 11

Volunteering — it's for the Burds

Today is a typical winter day at the Delaware Hospice Center. It is an overcast, chilly Friday afternoon, and the day is coming to a close. A few nurses, volunteers, and staff members are beginning to wrap up their shifts and are looking forward to the weekend. Bob and Nancy Burd, long-time volunteers of Delaware Hospice, have taken some time out of their day to stop by and say hello.

As soon as the couple walks through the main entrance, they are immediately greeted with a warm salutation from the friendly volunteer stationed at the front desk and a playful remark, "The security has arrived!"



A LETTER FROM OUR LEADERS



I'm delighted to share with you some exciting news as we embark on this new year, highlighting the profound impact of our collective efforts in supporting our hospice community.

Introducing our refreshed newsletter, now known as "Community Connections." This name change symbolizes our commitment to inclusivity and underscores the interconnectedness of our community, comprised of donors, volunteers, staff, and the individuals and families we serve.

"Community Connections" serves as a platform to showcase our heartfelt gratitude for the invaluable contributions of our donors, volunteers, and staff, and illustrates the undeniable impact made every day.

Through the pages of this newsletter, we celebrate the generosity of our donors, whose support ensures the continuation of essential services and programs for those facing serious illnesses.

We also shine a spotlight on the dedication and compassion of our staff, whose tireless efforts create a haven of comfort and support for our patients and their families. Their commitment to excellence is truly inspiring and deserving of recognition.

And let's not forget our remarkable volunteers, whose selfless acts of kindness enrich the lives of our patients and strengthen the fabric of our hospice community. Their unwavering support, whether through companionship, administrative assistance, or specialized skills, embodies our organization's spirit of giving.

As we embrace this new chapter with "Community Connections," let it serve as a reminder of the collective strength and unity that defines us. Together, we are a network of support, compassion, and care that extends far beyond the confines of a newsletter.

Warm regards,

Susan D. Lloyd, MSN, RN
President & CEO

John D. Shevock, FACHE, FACMPE
Board Chair

Volunteering...continued from cover page

A while back, a visitor mistook Bob for a security guard when Bob was stationed at the front desk. A nurse politely informed the visitor otherwise, and they went about their day. The nurses did not let it go, however, and Bob's nickname was born. Bob is now known as 'Security Bob' when he is greeted at the center. Nancy even took the liberty of crafting her husband an embroidered badge that spells out 'Security,' which receives a huge laugh every time Bob wears it proudly for everyone to see.



Bob and Nancy are passionate about their respective roles at Delaware Hospice because they have witnessed firsthand the benefits of receiving bereavement counseling and end-of-life care.

A few years ago, the Burds tragically lost their son. When they returned home from the hospital, they reached out to Delaware Hospice for help. They immediately connected with Robin Murphy, a Bereavement Counselor at Delaware Hospice, to get the assistance they coveted.

"Robin was very helpful when we spoke to her," Bob exclaimed, "We received help from Delaware Hospice and are extremely thankful for their services."

Nancy also decided to seek the assistance of hospice when it came time to consider care for her mother.

"We were extremely pleased with the service we received," Nancy said, "We wanted to show our appreciation and give back."

Bob and Nancy know what it is like to have to cope with loss. Now, because of their experiences, they are more than willing to tell their story, lend a hand, or share a conversation with someone who may be going through a similar situation. Over the years, the Burds have had countless interactions with patients and family members at the Delaware Hospice Center and in the community.

In 2023 alone, Bob volunteered over six hundred hours at the center. "It's fun, it's enjoyable," Bob mentioned, "Volunteering is something that I like to do."

If you know Bob, you are well aware that he takes immense pride in his golf game. Bob first connected with Delaware Hospice by participating in the Delaware Hospice Golf Outing over 15 years ago. Shortly after that, Bob helped create and organize an additional golf tournament with longtime friend, Frank Soltner, named the Eleanor Soltner Golf Outing to benefit Delaware Hospice and commemorate Frank's late spouse.



Save the date! The Eleanor Soltner Golf Outing—now the Frank & Eleanor Soltner Memorial Golf Outing—benefits Delaware Hospice patient services and honors longtime supporters of our mission.

Please visit delawarehospice.org/patient-caregiver-resources for more articles. 3

Nancy Burd has worked alongside Bob for years, assisting with his golf outings and many other projects. Her favorite aspect of her role is getting to work closely with Peggy Dolby, Delaware Hospice's Director of Philanthropy. Nancy previously worked in banking before she retired and provides insight and assistance with Delaware Hospice fundraising initiatives.

"We like to keep busy," Nancy asserted, "I have always been one who likes to do for others. Delaware Hospice is such a special place. The nurses and the aids do such a fantastic job, and it warms my heart to know that we can help them out."

Nancy prefers not to work directly in the center, but she continues to find ways to impact the hospice community. She is quite enthusiastic about sewing and quilting. After getting to know most of the nurses and the Certified Nursing Assistants (CNAs) over the years, Nancy wanted to show her appreciation by sewing zipper pouches filled with candy and thank-you notes. This act of kindness was extremely well-received by the employees at the center.

"It is an amazing job that the staff does here," she said, "It is not something that I could do."

Throughout her time volunteering, Nancy has also created many quilts for different organizations and individuals in the Delaware area.

As time has passed, the Burds have gained a new perspective and a fond appreciation for hospice. That is evident by just how much time and effort they put into each aspect of their volunteer duties. From countless golf outings, car shows, and Festival of Trees to quiet nights spent behind the front desk at the center and quilting behind the scenes, the Burds have truly made an impact in their community.



"I try to tell anyone that I know that hospice is not just for end-of-life," said Nancy. "There is so much that hospice care can do for people. It is an amazing service." — Nancy Burd

As the Burds concluded their rounds at the center, pausing and saying hello to nearly every person they walked by, joyous laughter and pleasant conversation filled the lobby. Their impact today—and every day—serves as a testament to the profound difference that can be made through compassionate service.

Upcoming Events

Milford Elks Lodge Dance Fundraiser

March 23, 2024 | 7:00 PM - Midnight

- Call Carmen Kemper for tickets & info: 302-670-2741
- \$35/single or \$50/couple for entrance only
- Live music, cash bar & food available

Jazz Brunch

April 14, 2024

11:00 AM - 2:00 PM

Harry's Savoy Grill, Wilmington

See article on page 6.

Upcoming Events

Wine Tasting

May 6, 2024

5:30 PM - 7:30 PM

Franks Wine

1206 N Union Street, Wilmington

- 10% discount on all in-store purchases during the event
- \$25 Registration Fee (100% donated to Delaware Hospice)
- 10% of sales during event donated to Delaware Hospice

Frank & Eleanor Soltner Memorial Golf Outing

July 29, 2024

9:00 AM Tee Time

Southern Delaware Golf Club

6152 S. Rehoboth Blvd, Milford

Hospice Fest 2024 Car Show

August 10, 2024 (rain date 08/11)

101 Veteran's Blvd, Milford

- Car Show, Car Corral, Festival, Dash Plaques, Door Prizes, Music, Vendors, and more!
- Registration required

Please visit us online at

<https://www.delawarehospice.org/events>

for more details

about all

DHI events.



Donor Spotlight



Our good friend, Ben Fournier (above, right, with Susan Lloyd, CEO) recently presented Delaware Hospice with \$8,000 check!

Ben, a 30-year volunteer at DHI, organized a Guest Bartender Evening and a Wine & Dine Day at BBC Tavern and Grill to benefit our Camp New Hope program, a four-day summer day camp for children and teens who are coping with the loss of a loved one.

Thank you for all that you do for Delaware Hospice, Ben! Your efforts are greatly appreciated and do not go unnoticed.



Ben (above-right, center) and other patrons like Laura Robelen, Board Member, and Chris Nasto, CFO, (above-left) were among the many DHI supporters at the Guest Bartender fundraiser.

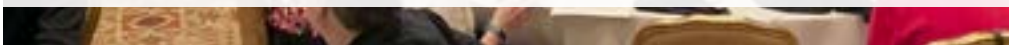
Donations are vital to our mission.



With your support, more families will have the opportunity to access the invaluable services provided by Delaware Hospice. Visit <https://www.delawarehospice.org/donate> or call 855.DHI.GIVE to donate today.



Jazz Brunch 2024: A \$1,000,000 Event in the Making



Picture this: A sun-kissed Sunday morning in April, the air alive with the promise of a day filled with music, laughter, and the tantalizing aromas of Creole cuisine.

Nestled within the esteemed walls of Harry's Savoy Grill, renowned for its culinary excellence in Delaware, you are joined by others who have come together in support of Delaware Hospice. Here, amidst the warm and inviting atmosphere, you will find yourself immersed in a sensory symphony.

Picture yourself indulging in the tantalizing flavors of Creole-inspired cuisine, transporting your taste buds to the vibrant streets of New Orleans. As you mingle with fellow supporters, sipping on handcrafted cocktails from the Bloody Mary and Mimosa bars, you find yourself swept up in the infectious energy of camaraderie and compassion. Every sip is a toast to the spirit of giving.

As the sun reaches its zenith, the stage comes alive with the infectious energy of the Red Alert Band. Renowned for their electrifying performances, this dynamic ensemble is now whisking you away on a musical journey. And as their jazz melodies fill the air, the dance floor beckons, inviting you to let loose and groove to the rhythm of the music. With each step, each laugh, and each heartfelt conversation, you're reminded of the power of community coming together for a common cause.

Next, picture yourself leaving the dance floor to peruse a treasure trove of coveted items, from luxurious getaways to one-of-a-kind treasures waiting to be discovered. Imagine the anticipation building as you compete for various treasures in the live and silent auctions. Feel the excitement as you vie for coveted event tickets, sporting goods, and spirits to elevate your experiences. With each bid, you're not just acquiring a prized possession – you're making a meaningful contribution to Delaware Hospice.

This is Jazz Brunch 2024, where every note builds toward a crescendo of compassion, filling the air with the sweetest melodies of community spirit and giving.



Aiming for New Heights

Since its inception over 20 years ago, the Jazz Brunch has captivated attendees with its vibrant atmosphere and has served as a lifeline for Delaware Hospice, raising an impressive \$980,000 to date. These funds have enabled us to provide essential services and foster a community of compassionate care for those nearing the end of life.

This year, we're thrilled to announce our goal of surpassing \$1 million in total funds raised—a milestone that speaks volumes about the generosity and commitment of our supporters. With your help, we can make history and continue to expand our impact on those in need. With each ticket sold, each bid placed, and each note sung, we move one step closer to our goal—a testament to the power of community and the enduring legacy of compassion.

Ways You Can Get Involved

Sponsorship Opportunities: Our Jazz Brunch offers four distinct sponsorship levels, each with its own set of benefits, including prominent advertising placements in our event program book and complimentary admission tickets. Your sponsorship not only showcases your commitment to our cause but also amplifies your brand's visibility within our community. **Visit <https://www.delawarehospice.org/jazz-brunch-2024/> for sponsor information and registration.**

Donate Auction Items: One of the highlights of our Jazz Brunch is the opportunity to bid on a wide array of auction items generously donated by area businesses/organizations/individuals. Your contributions help make our auctions a resounding success. **Visit <https://www.delawarehospice.org/jazz-brunch-2024/> for more info or to pledge your support.**

Attend and Indulge: Of course, the heart of the Jazz Brunch lies in its festivities. You already pictured yourself surrounded by the soulful melodies of the Red Alert Band, sipping on handcrafted cocktails, and savoring the flavors of New Orleans-inspired cuisine—let's make it happen! Individual and full-table reservations are available, so gather your friends and join us for an unforgettable afternoon. **Reserve your seat at the table! Visit <https://www.delawarehospice.org/jazz-brunch-2024/> today.**

Jazz Brunch Details

Your support of the Jazz Brunch ensures that, together, we can make a difference. So come, join us for Jazz Brunch, where good food, good music, good company, and good deeds intertwine to create an unforgettable experience. Together, we can make a difference in the lives of others, one bite and one beat at a time.

**April 14, 2024
11:00 AM - 2:00 PM**

Harry's Savoy Grill
2020 Naamans Road
Wilmington, DE 19810

- Creole Cuisine Buffet
- Live entertainment
- Live and silent auctions

Visit our website or scan QR code for more info.



Meet Our Board of Trustees

In the intricate tapestry of our nonprofit hospice organization, the role of our dedicated and effective Board of Trustees is paramount. These individuals serve as a guiding force, stewards of the organization's mission, and advocates for those facing life-limiting illnesses and their families. Their significance cannot be overstated, as they provide strategic direction, ensure accountability, and uphold the values that underpin the hospice's compassionate care.

We're proud to add this new section, allowing you to better understand our board, their individual contributions to our organization, and diverse backgrounds. These individuals bring a wealth of expertise, passion, and dedication to their roles, further strengthening our organization's ability to fulfill our mission.



John D. Shevock

John D. Shevock currently is Board Chair of Delaware Hospice Board of Trustees, Delegate Representative to the Association of Community Cancer Centers, and member of the Delaware Technical and Community College Terry Campus Advisory Council, Delaware Cancer Consortium's Delaware Cancer Registry Advisory Council, the Cancer Support Community of Delaware Kent County Advisory Council, and the Preliminary Review Committee for the Delaware Supreme Court.

John is the Senior Director, Oncology Service Line and Executive Director, Bayhealth Cancer Institute at Bayhealth Medical Center. He has the honor to work with multidisciplinary teams for over 19 years at Bayhealth to grow and develop cancer care services in central and southern Delaware.

“What attracted me to serve on the Board of Trustees at Delaware Hospice was their commitment to their patients and their families. As I have served on the Board, it is clear the leadership and employees of Delaware Hospice are committed to the mission of the organization to support all with compassionate care for those with serious illness.”

Previously, John worked with principal investigators and research teams at Duke University's Duke Clinical Research Institute on cardiology clinical research studies throughout the U.S. around the globe. He was a member of research teams at North Carolina State University partnering with the North Carolina Medical Society and at the Pennsylvania State University investigating managed care markets, telehealth use, and adoption of information technology.

John holds a Bachelor of Science in animal science and a Master of Science in Management from North Carolina State University. He is a Fellow of the American College of Healthcare Executives and a Fellow of the American College of Medical Practice Executives. He is also a member of the ACHE's Delaware Local Program Council.



Carmen J. Giannantonio

Carmen J. Giannantonio joined Delaware Hospice, Inc.'s Board of Trustees in June 2023 and serves on the Board's Finance and Value-Based Care committees. He is also a current member of the Board of Directors of Delrin® USA LLC and a member of the Finance Committee for Ronald McDonald House Charities of Greater Delaware. Carmen is a former member of EY's Corporate Development Leadership Network and the Association for Financial Professionals.

Carmen is a senior corporate executive with 43 years of finance and business expertise. He planned, negotiated, and executed complex transformational deals valued over \$200 billion, developed diverse global functions, managed P&L performance, established and managed corporate governance policies, successfully dealt with public company shareholder activists, and championed strategic actions that accelerated sustainable and profitable growth.

“The staff and volunteers of Delaware Hospice are the foundation of our outstanding organization. I am excited to work with this great organization in promoting and expanding our mission of caring for the seriously ill and their families.”

Carmen retired as Vice President, Mergers & Acquisitions (M&A) at DuPont de Nemours, Inc. in December 2023, responsible for organizational development, portfolio management, strategic assessment, and execution of transactions. He was a financial expert and innovative strategic leader who executed a series of complex mergers, company spin-offs, acquisitions, and divestitures that reduced financial cyclicality, improved profitability, and accelerated sustainable growth.

Carmen was the chief financial officer for DuPont's global Imaging Technologies business from 2007 to 2009. Prior to this role, he held various leadership positions in M&A, Treasury, Finance, Tax and joint ventures.

Carmen holds a Master of Business Administration from Drexel University, a Master of Science in Taxation from Widener University, and a Bachelor of Science in Accounting from Villanova University.

2024 Board of Trustees

John Shevock, *Chairperson*
Stephanie Smith-Christiano, *Treasurer*
Sharon Leyhow, *Secretary*
Ralph Begleiter
Thomas Brown
Barry Crozier
Gene Donnelly
Ronda Douglas
Carmen Giannantonio
Tom Hoyer

Steve Ladin
Dan McCarthy
Chuck Mowll
Laura Robelen
Cindy Stewart
Dale Stratton
John Ward
Susan D. Lloyd, MSN, RN, *President, CEO*
Andrew L. Himelstein, MD, *Medical Director*

Stellar Staff Spotlight

Our staff exemplified remarkable teamwork and dedication as we embarked on the journey to re-envision our core values encapsulated in "DHI TEAM". Through collaborative effort and open dialogue, we collectively explored ways to enhance and align our values with our evolving vision and goals. Together, we crafted a renewed sense of purpose and direction that reflects our shared commitment.



To celebrate this milestone achievement, we orchestrated a company-wide event that showcased our revitalized core values, fostering camaraderie, inspiration, and unity across all departments and levels within the organization.

Have a heartfelt story to tell about one of our team members? Call 302.478.5088 to discuss our Grateful Families program.

Above: Roxanne Couzens (Grief Support), Taylor Medler (Intern), Rolonda Sutton-Greene (Volunteers), Alethea Franceschi (Provider Services), and Dawn Young (Nursing).

We extend our heartfelt gratitude for your continuous support, which fuels our mission and empowers our team to continue their invaluable work. Your generosity helps us not only touch individual lives but also positively impact our community, creating a lasting legacy of care and compassion. Help us make a bigger impact by visiting <https://www.delawarehospice.org/donate> or call 855.DHI.GIVE to donate today.



Vital Volunteers

We extend our deepest gratitude to all the volunteers who dedicated their time, creativity, and efforts to adorn the Festival of Trees with enchanting decorations. Your meticulous work in hand-decorating wreaths, trees, and the venues where our beloved Festival of Trees events unfolded is truly commendable. Your commitment, beginning year-round in preparation, has contributed immensely to crafting a festive, joyous, and community-centered celebration that brings cheer to all who attend. Thank you for your unwavering support and for spreading the spirit of giving and togetherness.

Explore diverse opportunities matching your skills and interests. Call 800.838.9800 to start your rewarding journey as a Delaware Hospice volunteer today.



Above: Milford Rotary member volunteers: Matt & Katie Barczewski, Gary Downs – President, Doug Conkling, and Jack Donovan.

Ways to give: Becoming a Community Partner brings comfort and strength.

We extend a heartfelt invitation to all area businesses and organizations to stand united with us as a beacon of hope, resilience, and support by becoming a valued 2024 Community Partner in our mission.

We have designed the tiered partnership structure below to accommodate various levels of support, ensuring that each contribution is recognized appropriately. Your support will significantly impact the lives of patients and families while aligning your brand with a cause that matters.

We understand the importance of corporate partnerships and are committed to ensuring that your involvement brings meaningful benefits to your organization. By joining us as a Community Partner, your tax-deductible donation includes unique brand exposure opportunities, demonstrating your commitment to community welfare. **Visit <https://www.delawarehospice.org/become-a-community-partner/> to learn more about our program.**

Thanks to generous donors, we can do what's best for each patient and family without compromise. Even when Medicare, Medicaid, and private insurance benefits don't cover all of the costs of our programs and services, our supporters enable us to provide compassionate, expert care to our community.



Connect with Us Online



@Delaware Hospice



@Delaware Hospice, Inc.



630 Churchmans Road, Suite 200
Newark, DE 19702